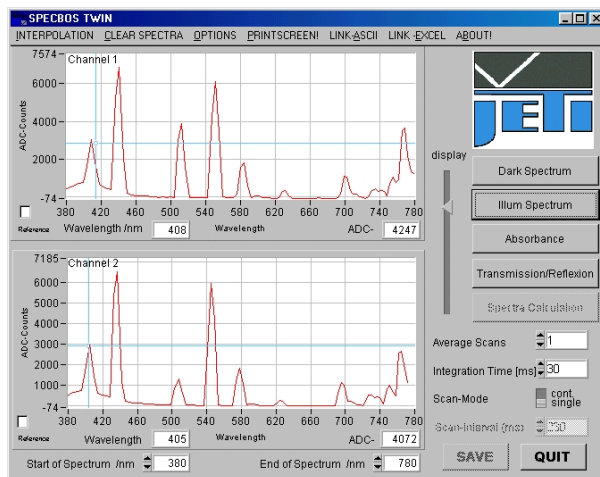


2-channel Spectrometer Specbos Twin

The **Specbos Twin** allows the simultaneous reading of two spectra in the Visible (or UV) wavelength range.

The measurement proceeds without any time delay between the two channels. Furthermore the reproducibility is high because of the lack of movable parts.



The Spec Twin software is suited for the read out of the two separate spectrometers, as well as for transmission / reflection calculations. Single and continuous measurement modes are possible.

Data can be exported in Excel™ spreadsheet format (.xls) and to ASCII data files.

The **Specbos Twin** can be delivered with two different VIS (or UV) spectrometers.

The **Specbos Twin** can be connected to a PC via a USB or an RS-232c serial interface.

Specifications

	version 1	version 2
Connector	SMA (optional ST) fiber-optic connector	
Optical input	100 μm (optional 50 μm) optical fiber	
Applications	Simultaneous spectral measurement (quality control, thickness measurement, ...)	
Spectral range	400 nm ... 800 nm	a) 400 ... 800 nm b) 250 ... 500 nm
Wavelength precision	± 0.5 nm	
Spectral resolution (FHWM)	9 nm (100 μm fiber) 5 nm (50 μm fiber)	
Digital resolution	14-bit A/D converter	
Stray light	typ. 10^{-2} at 420 nm (GG495)	$< 10^{-3}$ at 400 nm (GG495)
Sensitivity (550 nm)	typ. $1.2 \cdot 10^{14}$ counts/Ws	typ. $6.4 \cdot 10^{14}$ counts/Ws
S/N ratio	10^3	$> 10^4$
Spectrometer grating detector	Flat field imaging spectrograph Embossed Photodiode array 128-pixel 256-pixel	Flat field imaging spectrograph Holographic Photodiode array 128-pixel 256-pixel
Digital spectral resolution	7.6 nm 3.0 nm	4.0 nm 1.6 nm
Integration time	2 msec ... 64 sec	
Process Control	Digital I/O (4 in, 10 out (TTL))	
Repetition rate	max. 2 per sec	
Operation conditions	Temperature: 10 ... 40°C Humidity: < 85% rel. humidity (@ 35°C)	
Interfaces	USB 1.1, full speed (12 Mbit/sec); RS-232c 8N1, 115 kBaud	
Dimensions	150 mm x 100 mm x 70 mm	
Weight	300 g	
Accessories	Shutter drive output (TTL), Trigger input JETI Spec Twin PC software Operations manual USB cable Switching mode power supply (optional) PC Serial cable (RS-232c)	
Options	115 VAC (230 VAC optional) / 9 VDC	

Data Optics, Inc.
115 Holmes Road
Ypsilanti MI 48198-3020
Website: www.dataoptics.com

Phone: (734) 483-8228
Fax: (734) 483-9879
Toll-Free: (800) 321-9026
E-mail: sales@dataoptics.com