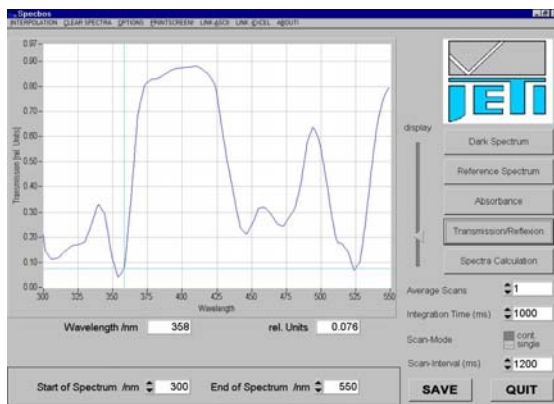


UV-VIS Spectrometer with Internal Light Source Specbos 2200

The **Specbos 2200** is a fiber-coupled UV-VIS spectrometer with a built-in UV-VIS light source (deuterium and tungsten halogen). It is characterized by excellent stray light performance and high sensitivity. The **Specbos 2200** is now offered in two serial interface versions: USB and RS-232c. The USB version can easily be connected to the USB port of a PC and measurements can be started almost immediately – a real plug & play solution! (The USB version is bus powered.)



Transmission spectrum of BG36 filter

The RS-232c version is supplied with a PC Serial cable and power supply. The instrument software automatically detects which COM port is being used, avoiding many problems during installation.

The JETI Specbos PC software is suited for spectra data acquisition and transmission / reflection calculations. Single and continuous measurement modes, as well as averaging, are possible. Data can easily be exported in Excel™ spreadsheet format (.xls) and to ASCII data files.

The **Specbos 2200** can be delivered with various fiber-optic measuring heads, e.g. dip & reflection probes, as well as a transmission measuring set up.

Specifications

Applications	Measurement of reflection and transmission spectra, e.g. of solid surfaces, filters and liquids
Spectral range	250 nm ... 500 nm
Spectrometer slit	100 µm fiber (optional 50 µm), NA 0.22
Light output/ spectrometer input	SMA fiber-optic connectors
Spectral resolution	9 nm (6 nm with 50 µm fiber) FWHM
Digital spectral resolution	4.1 nm
Digital resolution	14-bit A/D converter
Wavelength accuracy	± 0.5 nm
Wavelength reproducibility	± 0.1 nm
Stray light	< 0.1% (at 400 nm with GG495)
Sensitivity	typ. $1.3 \cdot 10^{14}$ counts/Ws
Integration time	10 msec ... 5 sec
Shutter	Internal motor, driven by software
Spectrometer	Flat field image holographic diffraction grating 128-pixel photodiode detector array
Light source	Tungsten halogen and / or deuterium lamp (selectable by switch)
Power supply	RS-232c version: 115 VAC (230 VAC optional) / 9 VDC USB version: Hub powered
Interfaces	RS-232c, 8N1, 38,400 Baud or USB 1.1, full speed (12 Mbit/sec)
Dimensions	170 mm x 175 mm x 55 mm
Weight	1 kg
Enclosed accessories	JETI Specbos PC software for Windows 98/2000/NT/XP Operations manual Transport case RS-232c version: Switching mode power supply PC Serial cable (9-pin D connector) USB version: USB cable

Data Optics, Inc.
115 Holmes Road
Ypsilanti MI 48198-3020
Website: www.dataoptics.com

Phone: (734) 483-8228
Fax: (734) 483-9879
Toll-Free: (800) 321-9026
E-mail: sales@dataoptics.com